

## LANA SINTETICA / SYNTHETIC WOOL

• **Composizione / Composition**

80% LA - 20% NY

• **Peso Totale / Total Weight**

700 gr/m<sup>2</sup>

• **Altezza / Width**

150 cm

• **Pilling Test / Pilling Resistance**

(EN ISO 12945-2)

3/4

• **Abrasione / Wear (Martindale)**

(EN ISO 12947-2)

30.000

• **Resistenza alla Luce / Colour Fastness**

(EN ISO 105 B02)

5/6

• **Solidità al Lavaggio a Secco /  
Colour Fastness to Dry Cleaning**

(EN ISO 105 X12)

4

• **Solidità al Lavaggio ad Acqua /  
Colour Fastness to Washing**

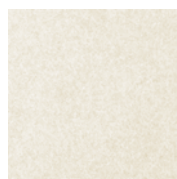
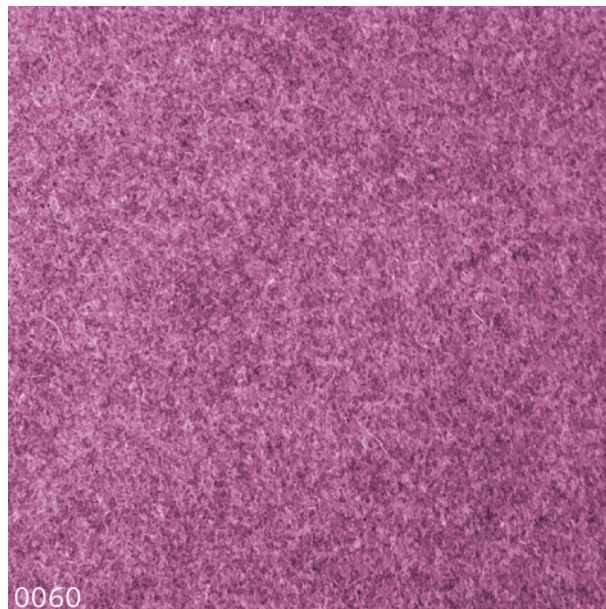
(EN ISO 105 X12)

3/4

• **Resistenza al Fuoco / Flammability**

IGNIFUGO Classe 1/IM

• **Cura del Tessuto / Product Care**



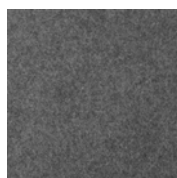
0041



0042



0043



0044



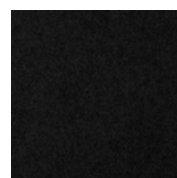
0045



0046



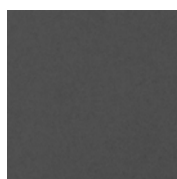
0047



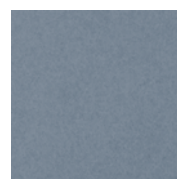
0048



0049



0050



0051

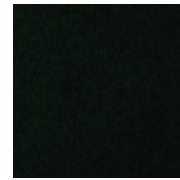


0052

**LANA SINTETICA / SYNTHETIC WOOL**



0053



0054



0055



0056



0057



0058



0059



0061



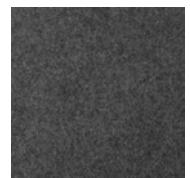
0062



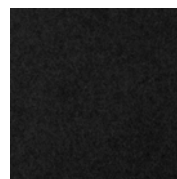
0063



0064



0065



0066



0067